

CTS-21085

Rotor Seal, 6 port, -COH

Comparable to: Vici®/Valco® C2-10R6-COH



Technical Data Sheet

1.0 Description

This rotor is designed to be compatible with Vici®/Valco® C2V valves. It is comparable to part number C2-10R6-COH.

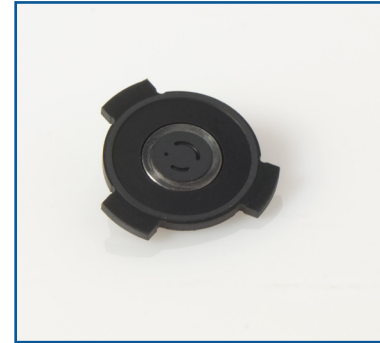
2.0 Materials Specifications

Vespel®

316 SS

3.0 Installation Information

Sciencix parts are designed to be compatible and interchangeable with OEM parts. Please see instrument service manual for proper removal and installation procedure.



4.0 Warranty

We view your business with us as a partnership based on mutual trust.

We extend a Lifetime Warranty against any manufacturing defects on all Sciencix HPLC repair parts. If a defect is identified, please contact us at 800.682.6480 or by email at sales@sciencix.com to report the issue. We will assist you with a resolution in a timely fashion.